



GMT MONTHLY MEMBERSHIP PROGRESS REPORT

Results as of: 5/31/2020

Multiple District 43

LOCATION: KENTUCKY

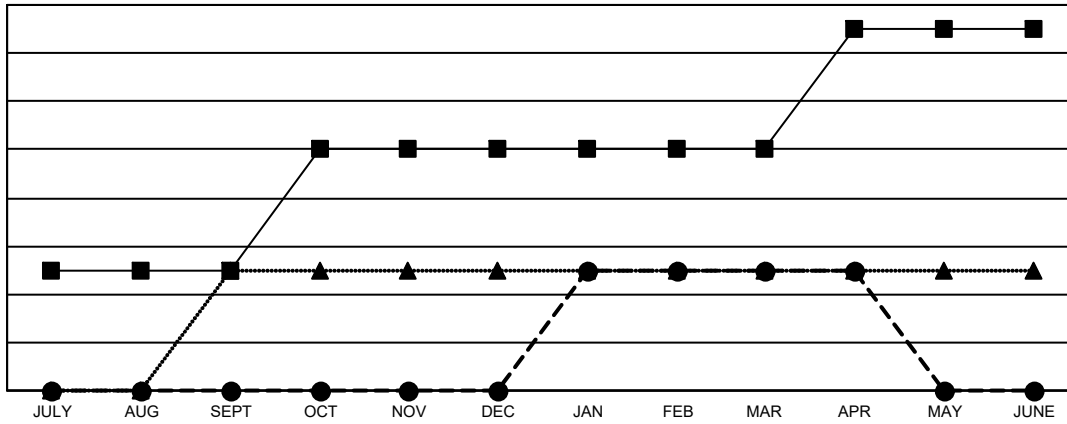
GMT: OPEN

GMT CA 1

Clubs			
RESULTS FOR 2019-2020			
QUARTER	NEW CLUB GOAL	NEW CLUBS	DROPPED CLUBS
JULY/AUG/SEPT	1	0	0
OCT/NOV/DEC	1	0	4
JAN/FEB/MAR	0	1	0
APR/MAY/JUNE	1	0	1

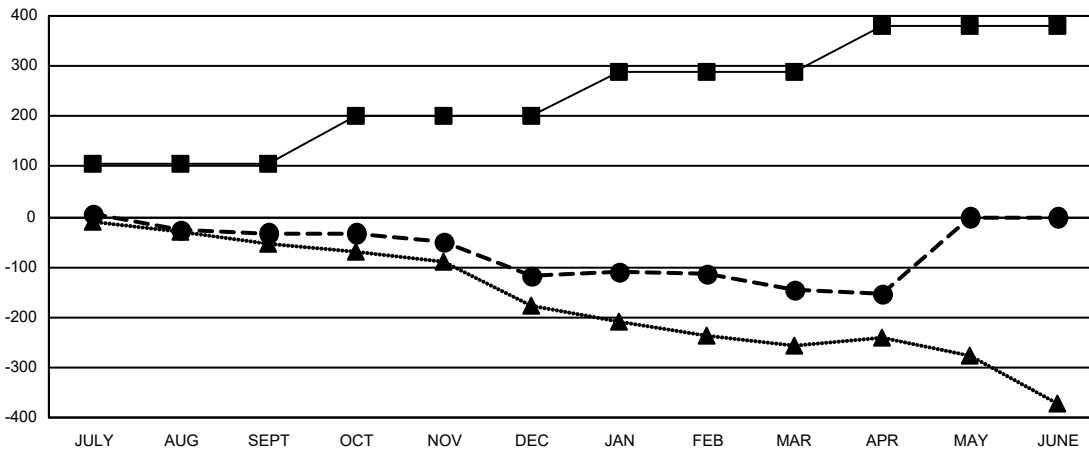
Members			
RESULTS FOR 2019-2020			
QUARTER	MEMBER GROWTH NET GOAL	MEMBER GROWTH ACTUAL	DROPPED MEMBERS ACTUAL (including transfers)
JULY/AUG/SEPT	105	73	100
OCT/NOV/DEC	95	67	142
JAN/FEB/MAR	90	91	107
APR/MAY/JUNE	90	8	18

GOALS AND ACTUAL NEW CLUBS CUMULATIVE



- - CURRENT YEAR GOALS FOR NEW CLUBS
- - CURRENT YEAR ACTUAL NEW CLUBS
- ▲ - LAST YEAR ACTUAL NEW CLUBS

GOALS AND ACTUAL MEMBERS CUMULATIVE



- - MEMBER GROWTH NET GOAL
- - MEMBER GROWTH ACTUAL
- ▲ - LAST YEAR MEMBERSHIP ACTUAL

DROPPED CLUBS: 5	
<u>DROPPED MEMBERS</u>	
DECEASED	46
CLUB CANCELLED	29
OTHER	292
TOTAL	367

71 CLUBS OF 165 ADDED 1 OR MORE NEW MEMBERS

[CLICK HERE FOR CUMULATIVE MEMBERSHIP DATA](#)

<u>GENDER DISTRIBUTION</u>	
MALE	2,666 (66.73%)
FEMALE	1,329 (33.27%)
TOTAL FAMILY UNIT MEMBERS	839
FAMILY MEMBERS PAYING HALF DUES	430